

The Unwound Yarn

Birth and Development of Textile Tools Between Levant and Egypt

Chiara Spinazzi-Lucchesi

Plates

Plate 1. Map of Egypt

Plate 2. Map of Levant

Plate 3. Tomb paintings: 1) Beni Hasan tomb of Baqt (Newberry 1893b: pl. IV); 2) Beni Hasan tomb of Baqt (Newberry 1893b, pl. IV); 3) ostrakon from Deir el-Medina (Vandier d'Abbadie 1937, pl. LXIV); 4) Thebes tomb of Daga (Davies 1913, pl. XXXVII); 5) Thebes tomb of Neferrenpet (Davies 1948, pl. XXXV).

Plate 4. Hanks of flax 1) no. 266; 2) no. 265.

Plate 5. Balls of yarn: 1) no. 264; 2) no. 270; 3,5) no. 7789; 4) no. 7790.

Plate 6. Balls of yarn: 1) no. 269; 2) no. 273; 3) no. 268.

Plate 7. Spindles: 1) no. 107; 2) no. 108; 3) no. 144; 4) no. 140.

Plate 8. Details of pegs attached to spindles to fasten the thread: 1) no. 032; 2) no. 149; 3,4) no. 001.

Plate 9. Details of encrusted spindles and wooden wedges: 1) no. 020; 2) no. 037; 3) no. 026; 4) no. 050; 5) no.139.

Plate 10. Spindle whorls and weights: 1) 194; 2) no. 126; no. 3) no. 237; 4) no. 258; 5) no. 163; 6) no. 229; 7) no. 337-43.

Plate 11. Spinning bowls: 1) no. 332; 2) no. 333 @Museo Egizio, Torino.

Plate 12. Spacers: 1-2) no. 329; 3-4) 330; 5) 331.

Plate 13. Bone spatulae: 1) no. 278; 2) no. 279; 3) no. 280; 4) no. 291; 5) no. 292; 6) no. 293.

Plate 14. Bone spatulae: 1) no. 294; 2) no. 295; 3) no. 296; 4) no. 297; 5) no. 305; 6) no. 306; 7) no. 307; 8) 276.

Plate 15. Details of spatulae: 1) no. 277; 2) no. 276; 3) no. 291; 4) no. 301; 5) no. 280.

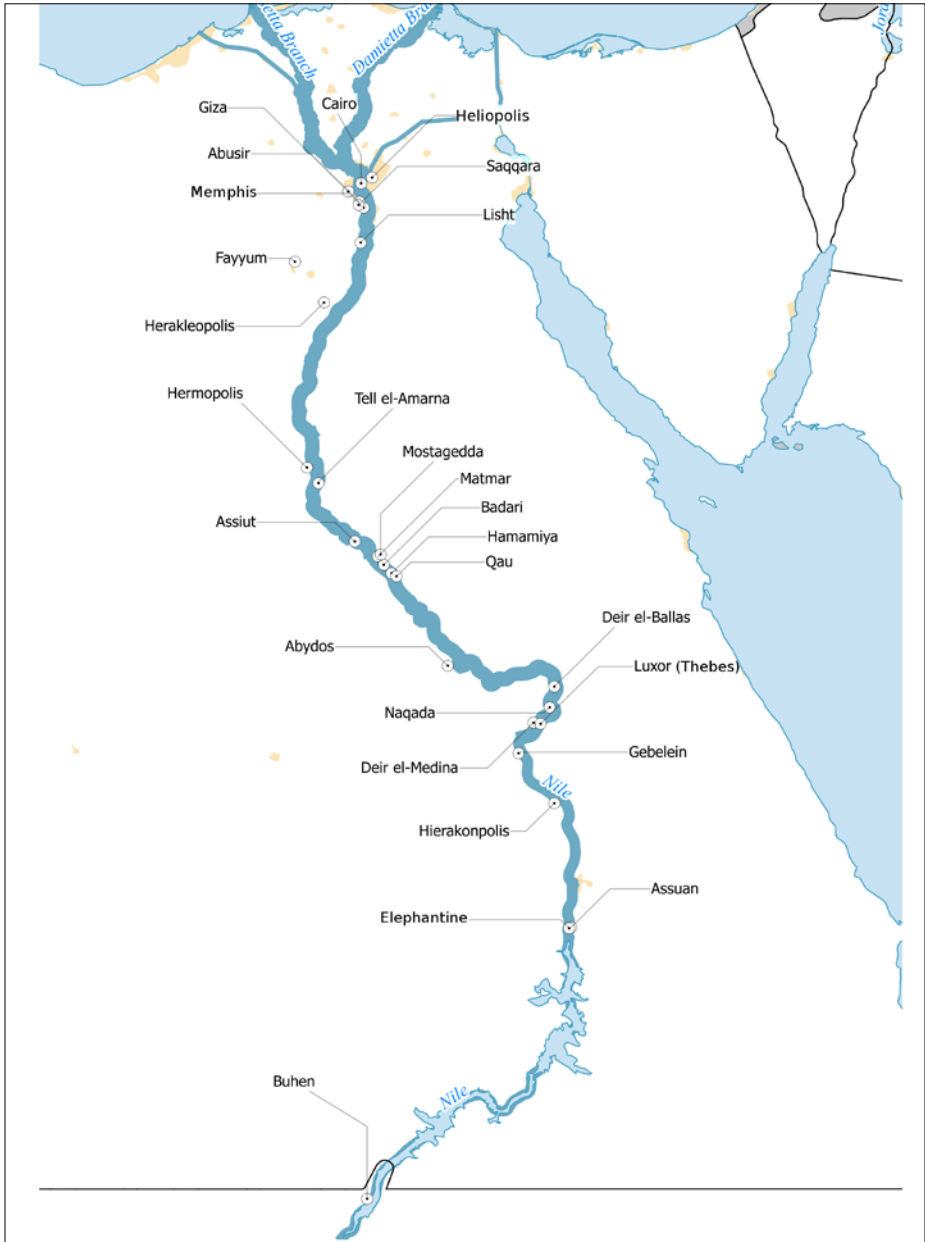


Plate 1.

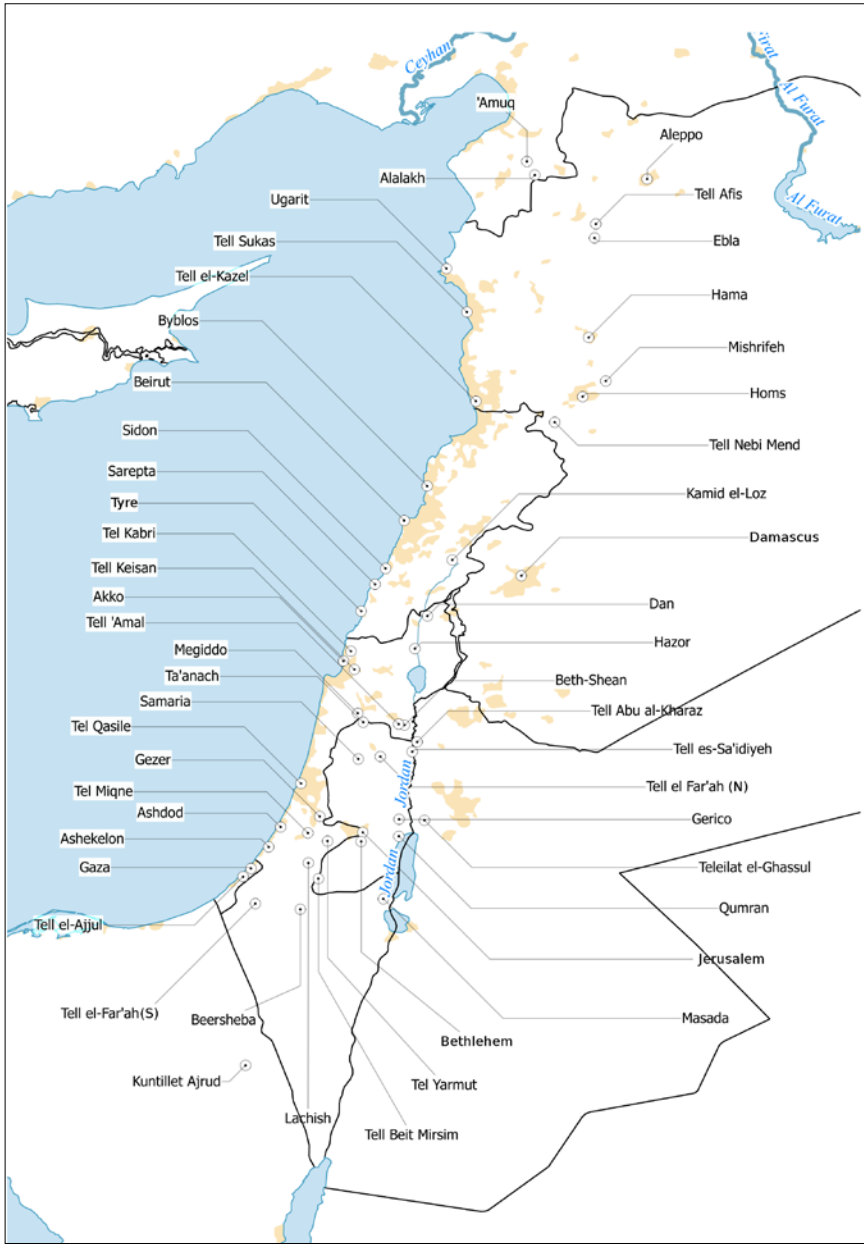


Plate 2.

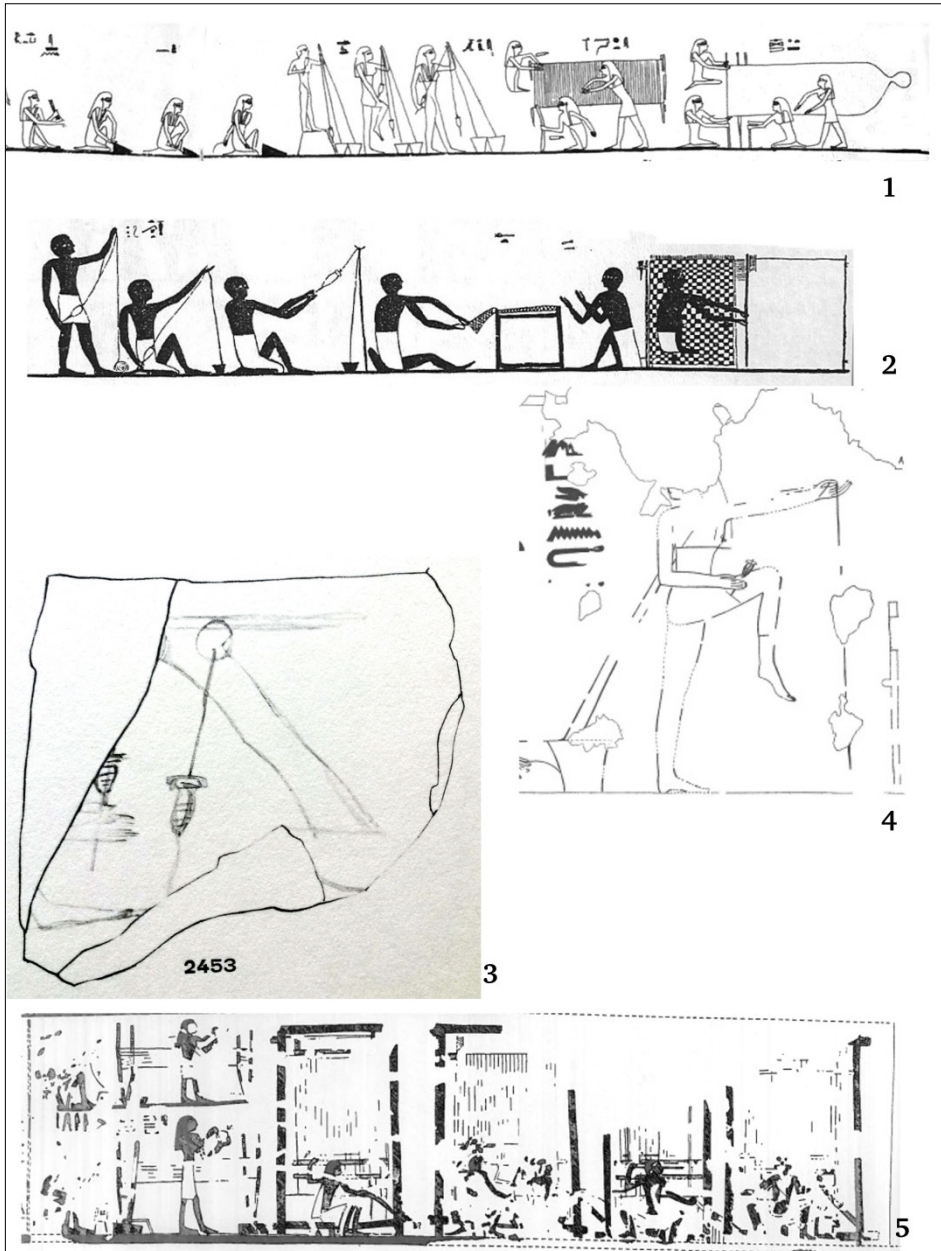


Plate 3.

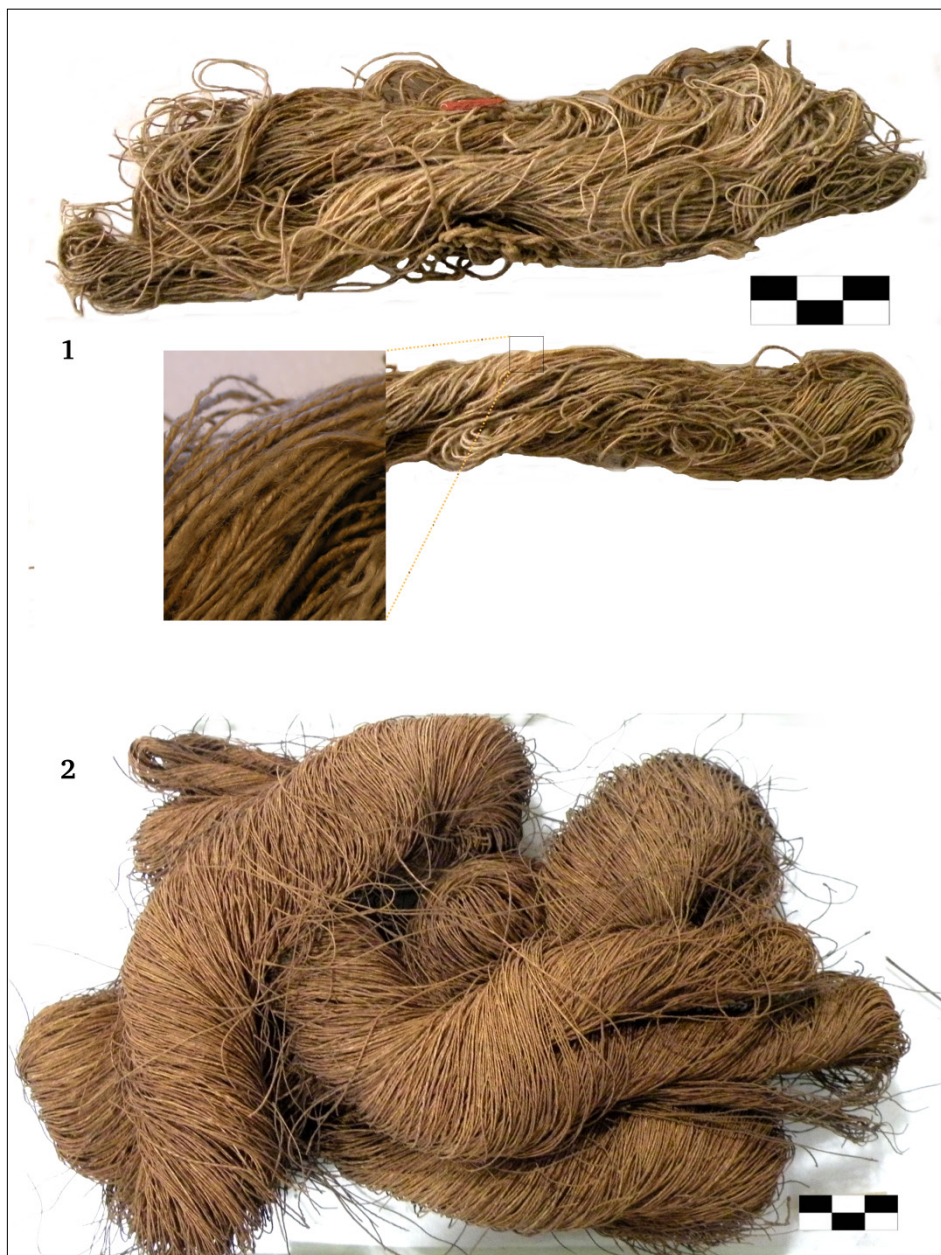


Plate 4.



Plate 5.



Plate 6.

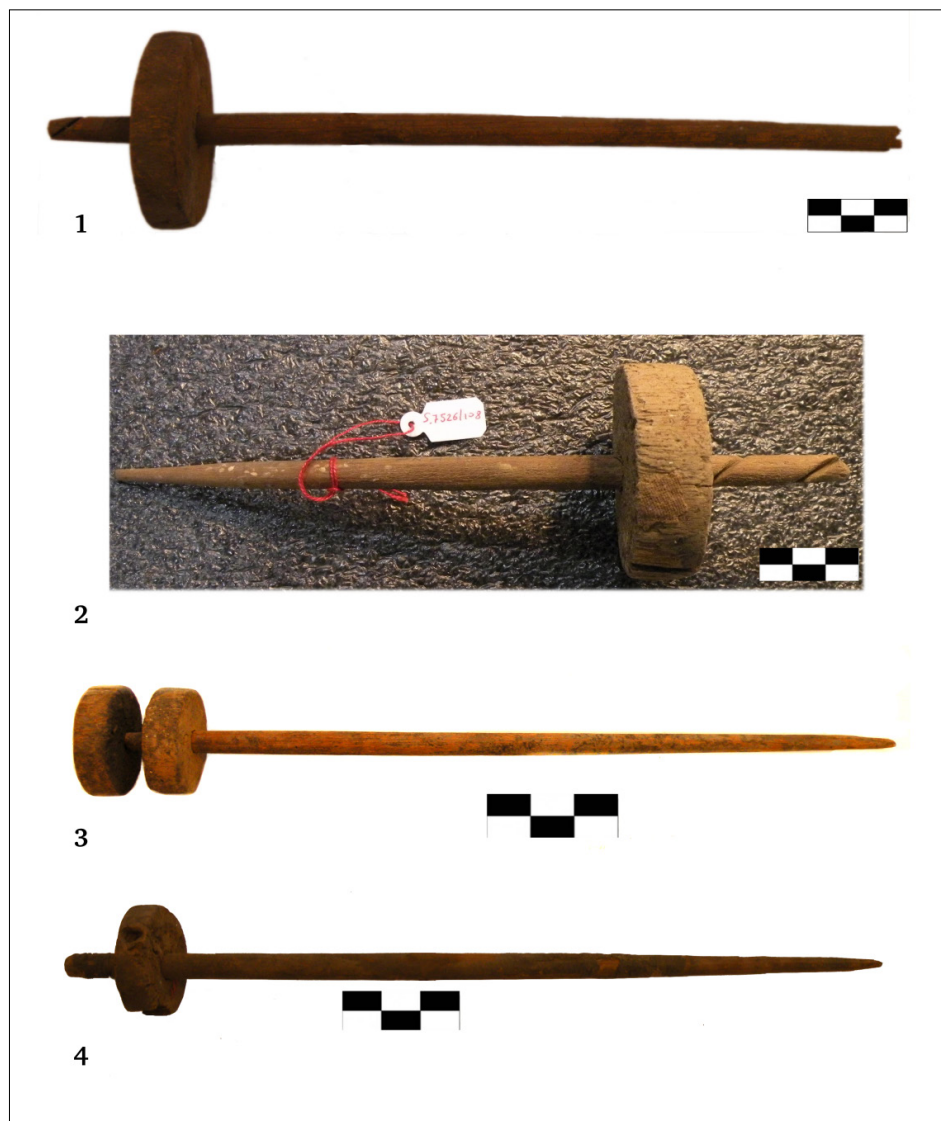


Plate 7.



Plate 8.

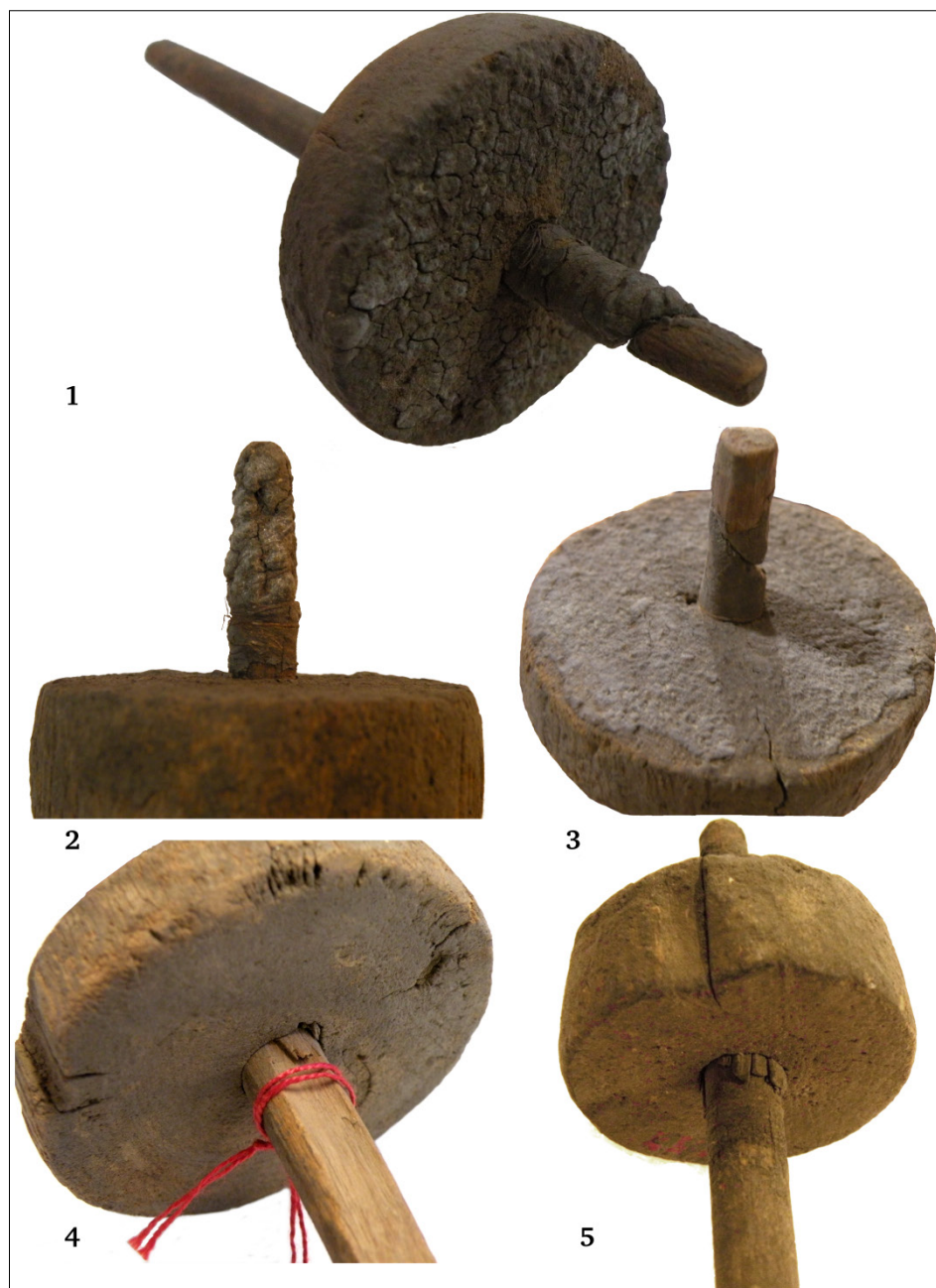


Plate 9.

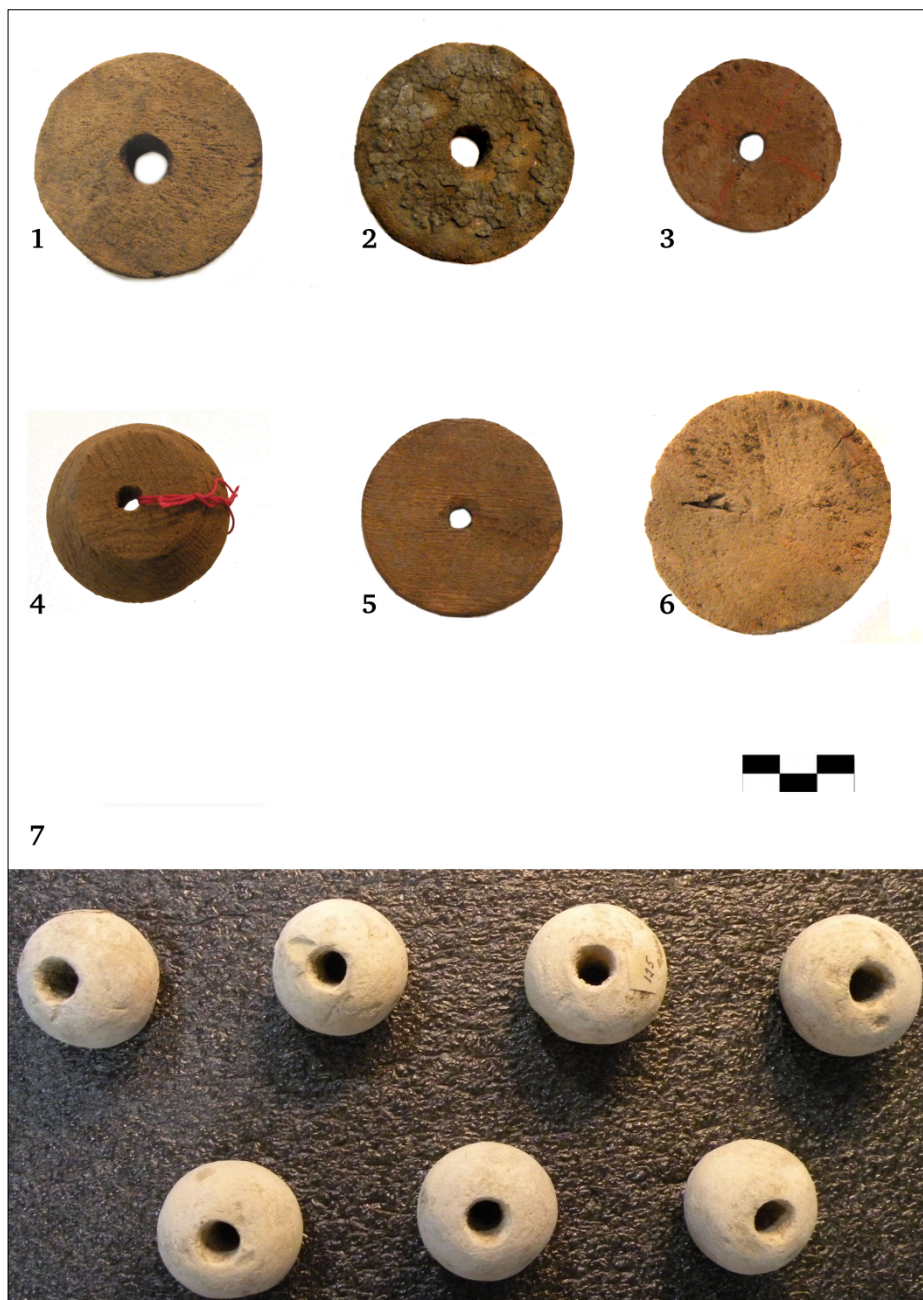


Plate 10.



Plate 11.

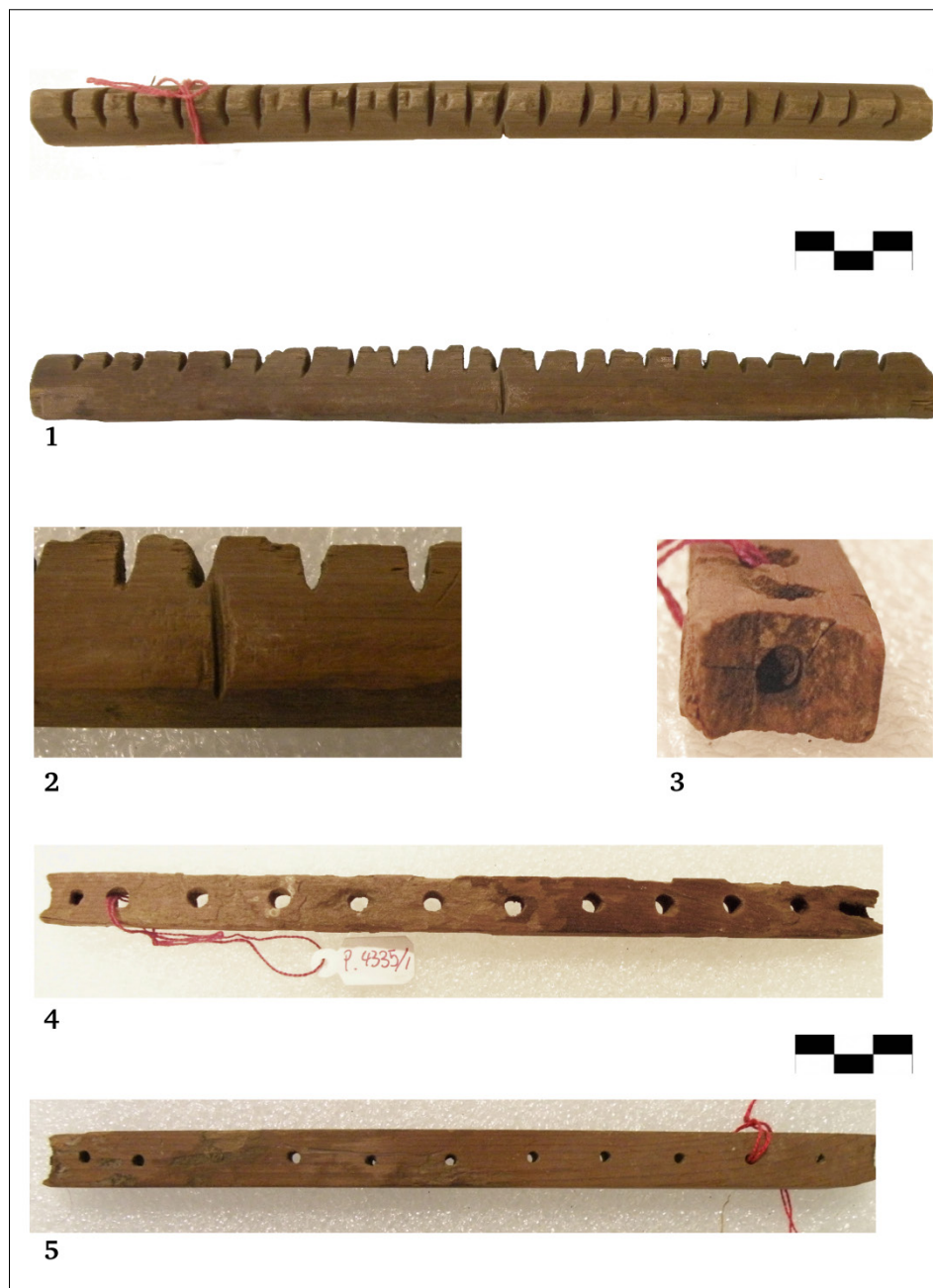


Plate 12.

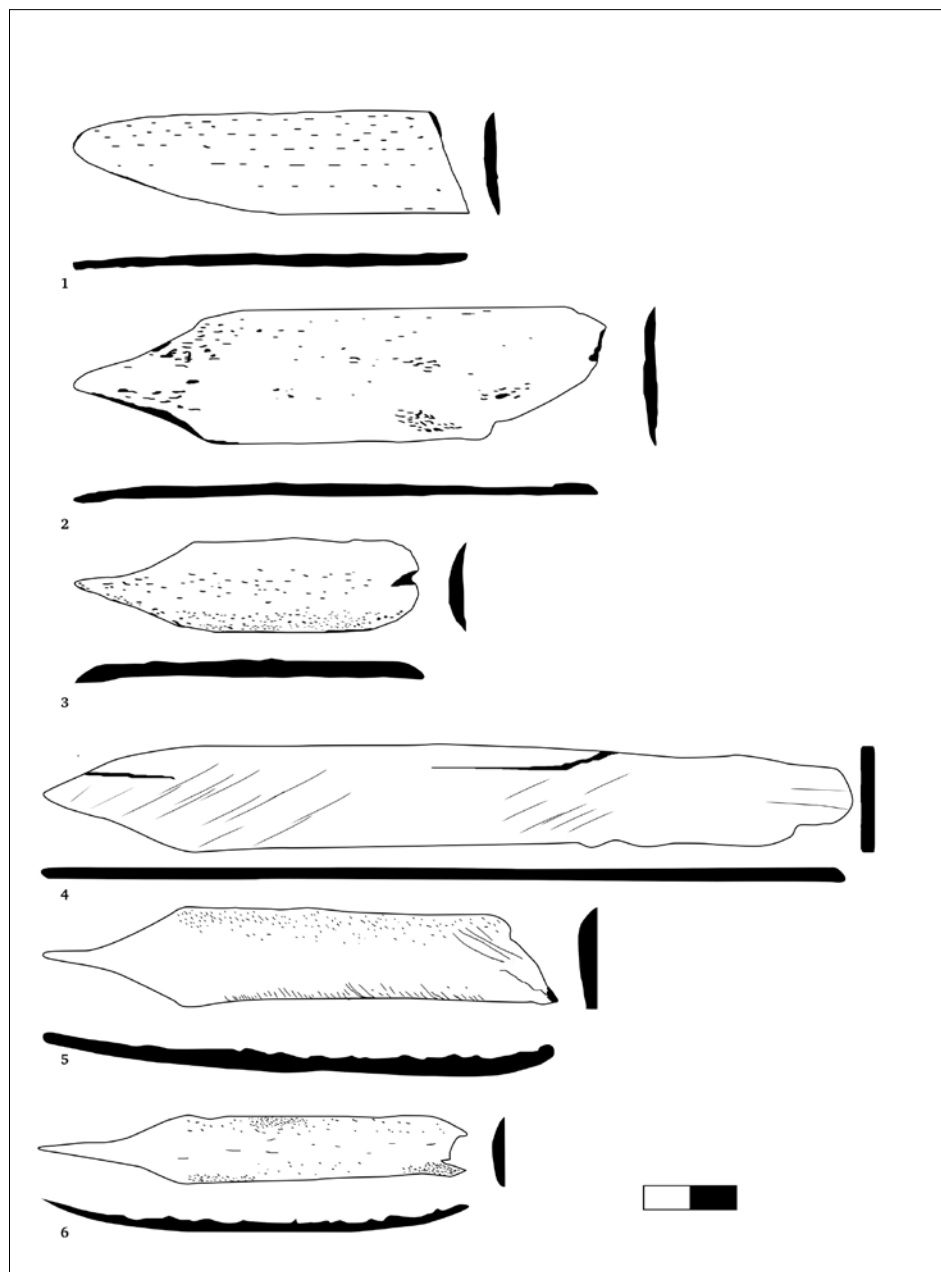


Plate 13.

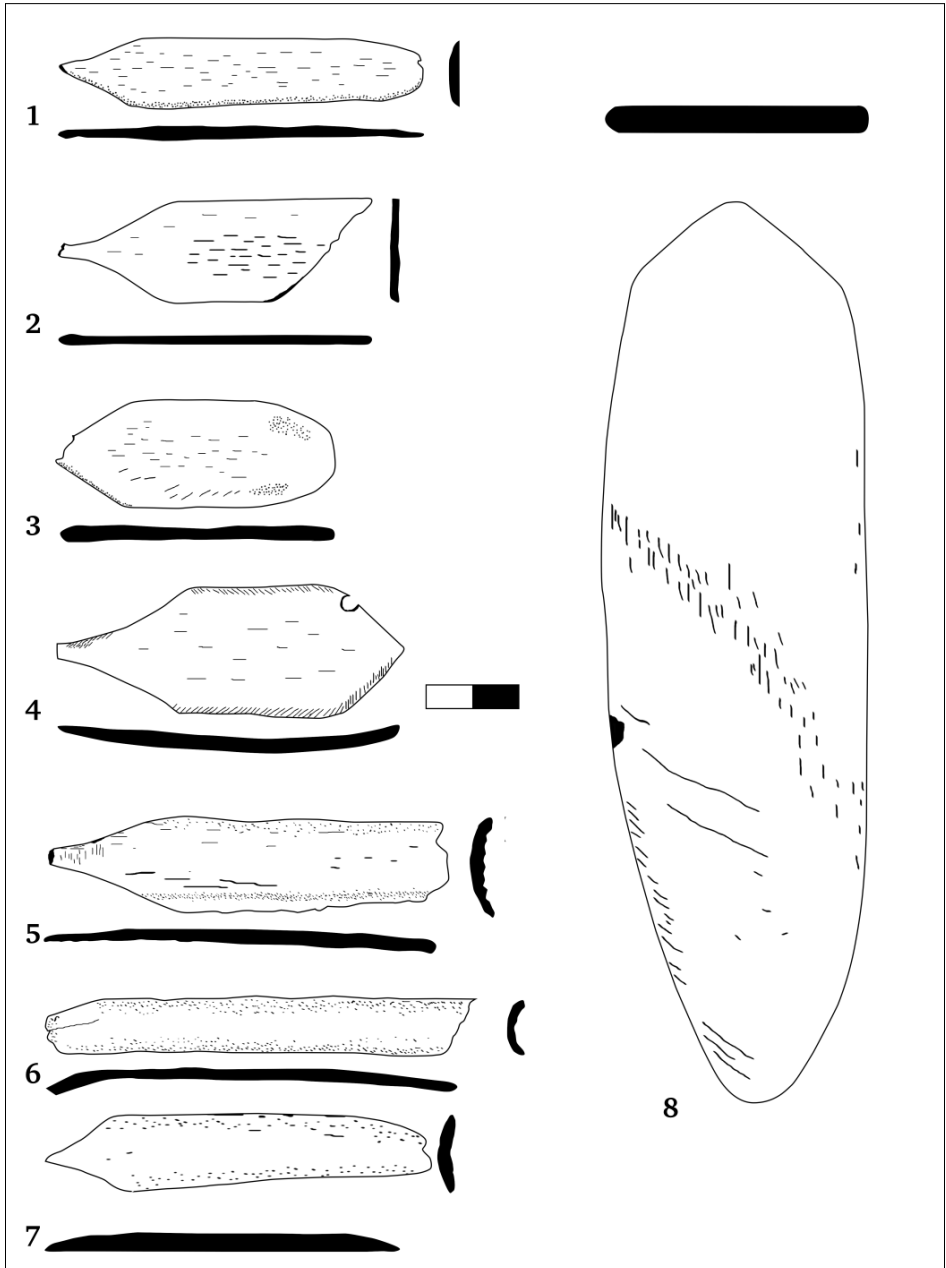


Plate 14.



Plate 15.